

**Subject:** College Autism Network - September 2021 Updates

**Date:** Thursday, September 2, 2021 at 3:46:29 PM Eastern Daylight Time

**From:** College Autism Network

**To:** brittany@collegeautismnetwork.org



**COLLEGE AUTISM NETWORK**  
ADVOCACY | RESEARCH | TRAINING

## College Autism Network Newsletter

September 2021

### In this Issue

- Registration info for the College Autism Summit
- Our new Autism-Specific Programs Database is Live!
- CAN's Inaugural Awards: Nominate a Program or Individual
- Useful Resources for Parents, Professionals, Self-Advocates
- Survey and Research Request
- The Next CANVAS Call

---

### Mark those calendars for the College Autism Summit!

October 26-29, 2021

#### Register for the Summit

- For the valuable *preconference workshops* on starting and enhancing a new program and preparing students for careers,
- For the *Research Symposium* on mental health,
- For the *panels* of self-advocates, employers and those developing autism-friendly campuses,
- For the excellent *keynote speakers*,
- For the 40 *general sessions* offered by experienced pros,
- For the *exhibitors* who hope to introduce you to new services and technology, and
- For the *networking opportunities* with others who share your professional and personal interests.

**Register** by **October 1** to receive the low regular rates (\$150 for professionals, \$75 for students).

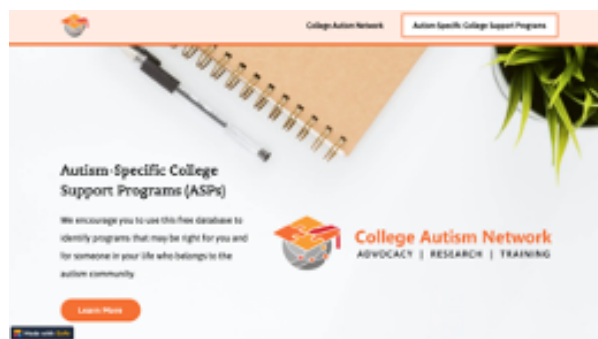


[Register Today](#)

---

## Announcing Our New Autism-Specific Programs Database

By Brett Ranon Nachman, CAN Director of Research



We are excited to finally be **launching our long-awaited Autism-Specific College Support Programs Database**. Spawning from the recurrently-updated PDF that we have featured on our CAN website over the past couple of years, this interactive and intuitive database enables all of you to see and sort through the programs existing across the United States that support autistic college students within higher education institutions. Search for programs based on institutional type, geographic location, and other criteria. Most importantly, this is a **free resource**; we want to ensure that the list is pragmatic and accessible. More information regarding the list's development is featured on the "Learn More" page.

Thanks to **Dan Burger** at the Frist Center for developing the visually appealing and easy-to-use database infrastructure, **Katie McDermott** for her tireless efforts in ensuring the content is accurate and robust, and many members of our community

who contributed to the curation of the programmatic list over recent years, as well as informing us of updated info. And we realize that programs experience changes, as well as new ones enter the mix, so please reach out to us if we should be apprised of any updates.

We hope you can use the database in your line of work, whether it be orienting parents and prospective college students about programs that may work for them, guiding higher education colleagues who may be seeking to direct students to resources, or employing it for any other reason.

---

## **CAN's Inaugural Awards: Nominate an Individual or a Program to Recognize Excellence in Practice and Research**



### **College Autism Network Excellence in Autism Practice and Research Awards**

We are so excited to announce the establishment of CAN's new effort to recognize outstanding service and scholarship in the field of autism support. We seek your **nominations** for the following four awards:

- Outstanding College Autism Support Program
- Outstanding Neurodiversity Workplace Initiative
- Outstanding Research on Autism in Higher Education
- CAN Contributor of the Year

If you know of a deserving program, project or individual, please submit a nomination (or nominate yourself--this is no time to be humble!).

**Nominations** require only some basic info and a short (150-word) description of the person or program.

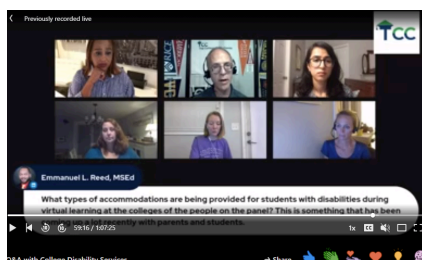
Recipients of the awards will be announced at this year's College Autism Summit.

---

**Great Resource for Families and Students About College-**

## Level Disability Services

CAN member Eric Endlich, of **Top College Consultants**, recently hosted a webinar with a cast of disability services experts. The discussion was chock-full of great information for families and students heading to college, and we recommend that you make it available to families seeking insights about sending an autistic student (or any student with learning differences or other disabilities) to college. Eric is a great resource and is generous enough to offer this valuable tool for free. You can find it on **YouTube**.



---

## Summit Program Presenter Needs Survey Participation: Can You Help?

**Kathy Weber, Loras College**

For an anticipated Summit program entitled “What We Wish We Knew: Tips for New Professionals in College Autism Programs,” I would appreciate the participation of new and “new-to autism” professionals as well as seasoned colleagues. I am seeking brief narratives/stories/anecdotes of your lessons learned from your first five years in the field of college autism support. Lengthy paragraphs are not expected, and bullet points are fine. Please use the following link and respond by October 1.

Thank you for your participation.

[Complete Survey](#)

---

## Good Things Happening at Drexel University

Always great when a CAN school/member gets some **love** from the folks at home. Great stuff, Amy Edwards!

---

## Nice Piece by Self-Advocate in Chicago Now

"I sometimes wonder if we who have ASD are the normal ones and the rest of the world is whacked." **Worth a read**, and a good article to share with colleagues who want to learn more about students with autism.

---

## Join Our Next CANVAS (CAN Virtual Association of Scholars) Call

Date: Friday, September 17 at 2 p.m. ET

Presenter: Dr. TC Waisman (Autism Training Academy)



**Presentation Topic:** How higher education leaders, faculty, and staff can enhance services and outcomes for Autistic students

**Presentation Details:** Autistic students in higher education often encounter systemic barriers in their educational careers that affect their outcomes. By focusing on policies and everyday practices that create or sustain barriers to positive outcomes for Autistic students, this talk turns the gaze on leaders, faculty, and staff to determine how they can dismantle existing barriers and create strategic supports that give Autistic students in higher education stronger outcomes.

---