

Subject: Autumn Activities and Other Fun Stuff from the College Autism Network
Date: Thursday, October 2, 2025 at 8:00:33 AM Eastern Daylight Time
From: College Autism Network
To: brittany@collegeautismnetwork.org



College Autism Network News and Notes

October 2025

AUTISM IN THE NEWS (AGAIN)



When the topic of autism shows up in the mainstream news (i.e., the New York Times or 60 Minutes), we're often asked for our opinion, or if we have a "statement" to share. Of course we have opinions. As an organization, though, we stick to our knitting. The College Autism Network's mission is to improve the outcomes of autistic students entering, experiencing, and leaving higher education.

CAN greatly values the rigorous research and evidence-based interventions undertaken by our members and others within the fields of college autism studies and college

Newsletter Highlights

Autism in the News (Again)

From Summit Central:

- We Think Learning Should Be Fun
 - Employers' Connection Series. Register Soon!
 - If You Know a Student... (and who doesn't?)
-

Upcoming Webinar on
Counseling and Autistic
Students: Oct 22

CANVAS Call: Transitions,
Adjustments and
Persistence: Oct 14

Program Leaders' Call:
Starting Off The Semester
Right (Hopefully): Oct 9

Landmark College's
Upcoming Professional
Development Opportunities

autism services. Our values lead us to trust researchers who have devoted their careers to the hard science of autism--the many environmental, genetic and biological studies reported in decades of distinguished scientific journals.

As we witness attempts to politicize autism and to discount the science of autism, we maintain our focus on our mission with a deep belief--in the words of the UN's Convention on the Rights of Persons with Disabilities--in "the inherent dignity and worth" of all people, including autistic people. And, as we do, we cheer on our science-focused colleagues as they contribute to our complementary work and hope that they will continue to receive the support and resources they deserve. We recognize the discouragement many of our members feel in the wake of recent national events, and hope that their membership in the CAN community is a source of comfort, support and information as we navigate these difficult times together.

THE COLLEGE AUTISM SUMMIT: WE THINK LEARNING SHOULD BE FUN, AND SO SHOULD YOU



Sure, we could list another batch of session titles here, but you can find them easily on our [website](#) (under "Conference Agenda"). Best practices for supporting autistic students, lived experiences, mental health, employment, academic supports, building alliances on campus--the list of topics is long.

But what our website doesn't tell you is why people who have been to the Summit come back every year. It's about connections, about finding inspiration in a session or a conversation, about being reminded of the value and importance of this work.

And it's about the famous Summit "vibe," a fun, relaxing, provocative and respectful environment for all. Yes, we'll have therapy dogs. Yes, we'll have a special night with a ND improv group for interested folks. Yes, we'll have a list of sensory-friendly things to do in Pittsburgh. Yes, we'll

Neurohub Learning: A New Platform To Help Students and Autism Professionals

CAN Continues to Offer Reduced Membership



have delicious lunches prepared by a catering staff that gets our attendees in a hotel that thinks we're cool, which we are. And yes, we will have a lot of excellent content. So we hope you'll join us. See you in Pittsburgh in just a few weeks.

Register by October 15 to get the regular rate!

[Register Here!](#)

EMPLOYERS' CONNECTION SERIES. REGISTER SOON!



New to the Summit is the Employers' Connection Series (ECS), our "Symposium within the Summit." This is a Russian-nesting-doll-kind of learning for those who currently have neurodiversity employment initiatives as well as those who want to figure out how to make their work environments more neuroinclusive.

The ECS offers a condensed schedule for those who can't spend the entire Summit with us. It's *Sunday* afternoon from 1 till 5 pm, followed by a networking reception with program leaders and CAN Board members, then a set of excellent sessions on *Monday*, including our Employment Plenary: "Bridges to Belonging: Mentorship for Autistic and Neurodivergent Talent." The day wraps up with yet *another* reception and our poster session. ECS participants pay a reduced fee but get a ton of great learning and networking opportunities.

See the [detailed schedule here](#), and register soon as space is limited.

Many thanks to our Summit Diamond and Platinum Sponsors!



LANDMARK
COLLEGE



LifeWorks



SEEKING STUDENTS TO ATTEND THE
SUMMIT



If you know an autistic or similarly neurodivergent undergraduate student who is interested in developing their national network and leadership skills, please encourage them to attend the College Autism Summit. Our Student Experience track is designed to connect autistic students across the country and beyond and amplify autistic voices in campus conversations.

We offer a 50 percent registration discount (\$250) for undergraduates who participate in the Student Experience at the Summit. For more information, visit our [website](#).

Thanks to our Student Experience Sponsor!



[Register Here!](#)

**UPCOMING WEBINAR ON COUNSELING
AND AUTISTIC STUDENTS**



Please join us for a conversation with Dr. Julie DiMatteo, clinical psychologist with CBT Specialists. Julie is a long-time CAN member and part of our Consultants' Collective with an extensive background in higher education.

Wednesday, October 22, 4 pm ET

Referring Autistic Students to Counseling: Demystifying the Experience to Ensure a Smooth Handoff.

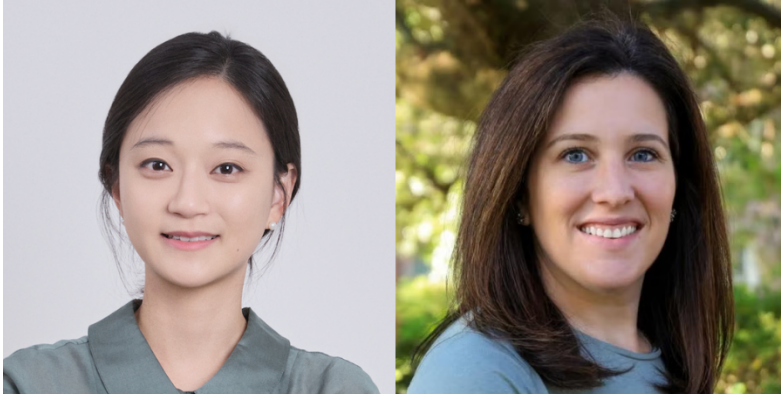
Providing referral to counseling services is often an essential component when working with university students who are struggling. While many students initially express hesitancy receiving this referral, this concern may be even stronger for autistic students who are more likely to have prior histories of interpersonal trauma and negative therapeutic experiences. As a result of these histories, autistic students have lower rates of initiating university-based counseling services compared to their non-autistic peers. Therefore, the aim of this talk is to help student personnel:

1. Learn strategies to provide referrals with consideration to the histories and prior experiences of autistic students
2. Increase knowledge of the counseling process to provide accurate information and improve preparation for services
3. Develop skills to respond to challenges in initiating services and concerns that arise during the initial phase of counseling

This webinar is free for CAN members, and \$50 for non-members.

Register Here!

CANVAS CALL TO CONSIDER TRANSITIONS AMONG UNDERGRADUATES



Join the CANVAS (CAN Virtual Association of Scholars) research community for our October presentation.

Date: Tues, Oct 14 at 10am EST

Meeting Link: <https://pitt.zoom.us/j/99181690674>

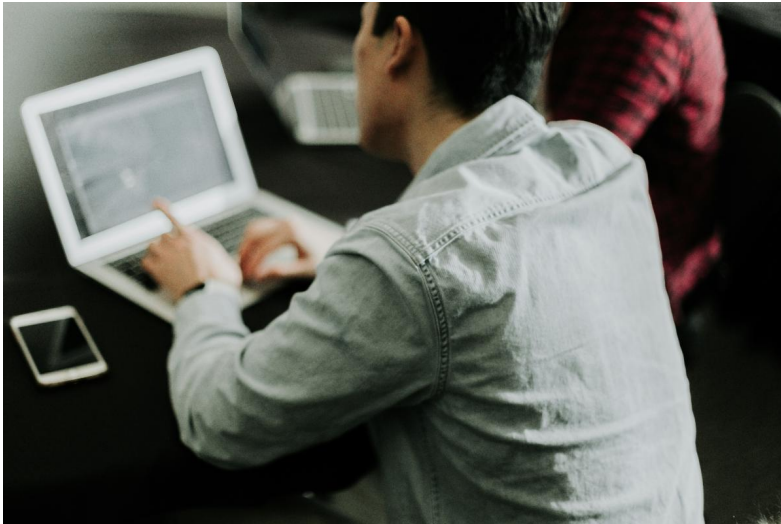
Presenters: Dr. So Yoon Kim (Assistant Professor of Diversity and Special Education, Korea University) and Dr. Shannon LaPoint, Assistant Professor of Special Education, Florida State University)

Title: Transitions, Adjustments, and Persistence: Autistic Undergraduates Navigating Higher Education

Description: Drawing from two in-depth qualitative studies, this presentation highlights autistic undergraduates' experiences of transition, adjustment, and persistence in college. Early transition was shaped by proximity to home, family support, new social relationships, transition programs, structural changes from high school, and logistical barriers such as transportation and housing. Students felt adjusted after developing familiarity with campus routines, achieving academic success, and forming meaningful peer connections. Persistence was driven by intrinsic motivation, the value of a degree, and family expectations. Findings highlight the need for autism-tailored, neurodiversity-affirming transition programs, proactive academic advising that fosters routine, predictability, and engagement with academic interests, and expanded peer engagement opportunities to help students navigate college and persist.

If you are not currently on the CANVAS list, please [email Dr. Brett Nachman](#) to be added to the list. You'll then get reminders of each presentation with a link to join the session.

UPCOMING AUTISM PROGRAM LEADERS' CALL



Join your colleagues for an informal Zoom conversation about the start of the school year and other topics on your mind. We'll get together on *Thursday, October 9 at 4 pm ET*.

If you're on our Program Leaders' listserv, you'll get an email with the link in it. If you'd like to be added to the list (we're fairly flexible about the definition of "program leaders"), [email Lee](#) to be added.

LANDMARK COLLEGE OFFERS PROFESSIONAL DEVELOPMENT OPPORTUNITY IN ACADEMIC SUPPORT



LANDMARK COLLEGE

For education professionals and autism advocates, Landmark College is offering “Academic and Cognitive Supports for Autistic Students”, a graduate-level, online course running November 21 -- January 25.

The application deadline is November 2. This and other November courses can be taken individually or as part of Landmark College’s highly regarded online [certificate program in Learning Differences and Neurodiversity](#) with a choice of specializations in Autism on Campus and Online, Executive Function, or Postsecondary Disability Services.

For more information or to apply, see the certificate [website](#) or contact Carol Beninati, Certificate Program Coordinator, at institute@landmark.edu or (802) 387-1662.

NEUROHUB LEARNING: A COMPANION FOR COLLEGE SUCCESS



Neurohub Learning is an online platform built by occupational therapists and neurodivergent experts. It supplements—not replaces—therapy or campus supports.

- For Students: Micro-learning modules and real-time access to experts provide practical strategies to prevent burnout, support executive function, and take steps toward career goals. Neurohub also connects students with free supports available on campus and in the community to strengthen long-

term success.

- For College Staff: A companion resource to enhance career readiness programming and better support neurodivergent students. Newer professionals can deepen their understanding of effective strategies.

[Try it free for one month](#) with promo code:
NHL1MONTHFREE

MEMBERSHIP OPTION FOR CAN COMMUNITY MEMBERS IN NEED



If you have lost your position or your program has lost its funding due to the current political climate, we've got you covered. You can join or renew your CAN membership for just \$25 for the coming year. We want to keep you connected to the CAN community!

This newsletter is published monthly by the [College Autism Network](#), an independent 501(c)3 organization supporting the success of autistic college students and the professionals who work with them. Want to share an article? Feature an upcoming event? Post a job opportunity in autism support services? Our monthly newsletter reaches over 3000 self-advocates and professionals. Send it [to Lee](#) and we'll share it.

Was someone nice enough to forward this newsletter to you? We're happy to add you to our mailing list to receive it directly. [Send us a note.](#)

If you appreciate our work, please consider [joining CAN](#) to receive additional information and discounts on some of our resources and to support our work. Individual and organizational memberships are available.

The [College Autism Network](#) is supported by the [Frist Center for Autism and Innovation](#) at Vanderbilt University.

College Autism Network | 19 Ocean View Ave | Mystic, CT 06355 US

[Unsubscribe](#) | [Update Profile](#) | [Constant Contact Data Notice](#)



Try email marketing for free today!